



POLAR APEX

INFERNO SUPPRESSOR COVER (ICS)



POLAR APEX

INFERNO SUPPRESSOR COVER (ICS)

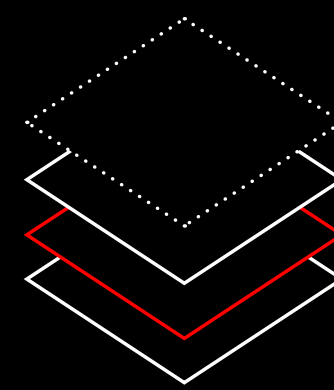
PATENT PENDING LOCKING MECHANISM

OUR 2-POINT LOCKING MECHANISM LOCKS THE SUPPRESSOR COVER TIGHTLY TO THE SUPPRESSOR BODY TO PREVENT UNWANTED MOVEMENT OR DETACHMENT

CHANGEABLE SKIN

CUSTOMIZE YOUR SUPPRESSOR COVER WITH INTERCHANGEABLE SKINS FOR MISSION-SPECIFIC VERSATILITY

PROPRIETARY MULTILAYER DESIGN



CHANGEABLE CORDURA SKIN
PU-COATED HYDROPHOBIC COVER LAYER

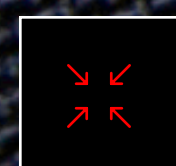
CARBON FIBER ARAMID
EXTRA LEVEL OF PROTECTION, STABILITY AND INSULATION

CUTTING-EDGE INSULATION FABRIC

STICHING
HIGH QUALITY MIL-SPEC ARAMID AND NOMEX THREAD



KEY FEATURES



WILL NOT LOOSEN DURING USE



EASY TO DETACH



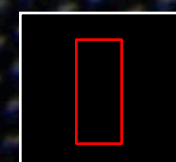
SUPERIOR ISOLATING PROPERTIES



PROTECTS FROM CONTACT BURN



MULTIPLE VARIANTS



CHANGEABLE OUTER SKIN

VARIANTS

HUNTER (ISC H)

RATED FOR BOLT ACTION RIFLES

MAXIMUM TEMPERATURE: 700°C (CONTINUOUS)

SIZE: SUPPRESSOR SPECIFIC

DEFENDER (ISC D)

RATED FOR SEMI-AUTO RIFLES

MAXIMUM TEMPERATURE: 1500°C (CONTINUOUS)

SIZE: SUPPRESSOR SPECIFIC

OPERATOR (ISC O)

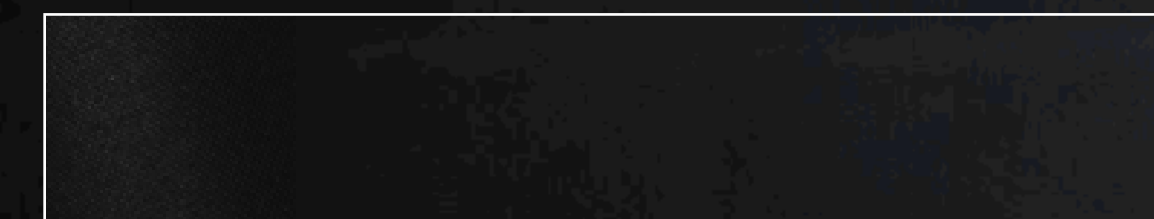
RATED FOR FULL-AUTO RIFLES

MAXIMUM TEMPERATURE: 1900°C (CONTINUOUS)

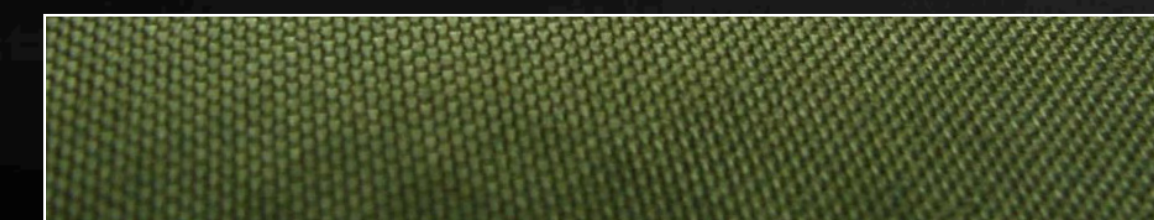
SIZE: SUPPRESSOR SPECIFIC

STOCK SKINS

BLACK (BLK)



OD GREEN (ODG)



FLAT DARK EARTH (FDE)



ASK FOR CUSTOM SKINS OR PATTERNS



POLAR APEX

POLAR APEX FINLAND

POLARAPEX.FI

INFO@POLARAPEX.FI

@POLARAPEX_FINLAND